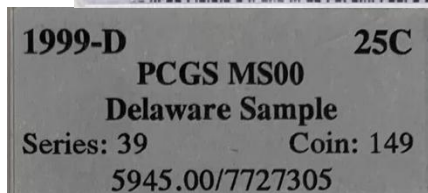


PCGS Blue Label State Series Samples

Series: 39

Coin: 156



CGS-Sample
Louisiana

PCGS MS00
New York Sample

PCGS Blue Label State Series Samples

Contents

WHITE PAPER REVISION HISTORY	1
Introduction	1
PCGS Labels and “Generations”	3
The Eleven types	9
Classifier	11
Series/Coin Samples	17
Non Series/Coin Blue Label Samples	24
Promotional Samples	27
Cross Reference and Populations	29
Appendix – Cross References	34
References	36

PCGS Blue Label State Series Samples

WHITE PAPER REVISION HISTORY

Date	Version	Notes
2024-11-04	0.9	Initial version
2024-11-30	1.0	Posted to site
2025-03-24	2.0beta	Rewrite for review
2025-03-28	2.0beta2	Revised per comments
2025-04-27	2.0beta3	Typo on Type 11 (s/b space not dash in the table) and added partial note about the IG all 50 state sample set.
2025-06-14	2.0	Released

Introduction

In 2023, with access to Cameron Kiefer's personal collection and two other collections, a significant number of previously unknown Blue Label 50 State Quarter (50SQ) samples became available to research.

The certificate numbers are not found in the PCGS database, adding to confusion. Prior data from Cam's SampleSlabs.com often did not include reverse photographs leading to inaccuracies when the occasional sample slab was offered for sale on eBay.

Randomly cataloging what had been seen created a large number of PCGS-025-4-# numbered sample slabs in the 1st and 2nd editions.

PCGS Blue Label State Series Samples

Edition	# of Schwager#s
1 st	28
2 nd	32

The addition of another 20 or more, largely uncollectable, items in the 3rd edition would have contributed to an already messy situation.

Time for a numismatic solution - a significant rework of the PCGS-025-4-# Schwager numbers.

Spreading the collection out across five square feet of carpet and visually grouping the samples showed two basic sets, the ones with Series/Coin data and the ones without. The distinguishing mark is this:

Series: 39 Coin: 156

The samples with Series/Coin include the early 50SQs, while the non Series/Coin samples apparently begin with 2005's first released coin, California, although there are earlier coins used.

Continuing the process and focusing on the visual clues such as the presence/absence of the bar code, the three different holograms, and differences in the text on the obverse label created eleven *types*, seven with the "Series/Coin" text and four without the "Series/Coin".

Each of these eleven *types* are assigned a unique Schwager#.with some Schwager Numbers from the 1st and 2nd edition have retired and new numbers assigned for each type. Numbers assigned to misspellings and other oddities have been retained. Several numbers tentatively assigned for the 3rd edition (after PCGS-025-4-32) were reclaimed.

PCGS Blue Label State Series Samples

Note that there are other samples that are quite similar to the Series/Coin solid blue label 50SQs: three cents, one dime, and two “Golden” dollars that are listed on Cam’s site and in the book. There are non Series/Coin solid blue label samples, primarily Jefferson nickels from the 2006 era.

This white paper describes the new PCGS-025-4- catalog taxonomy and presents the cross-reference, which gives us 29 PCGS-025-4- Schwager#s in the 3rd edition after the retirements.

PCGS Labels and “Generations”

The study of “generations” is an attempt to relate the visible characteristics of the various slab shells, holograms, and labels to the approximate date the slab was created. Several attempts have been made, initially in message threads on the PCGS Collectors Forum and other boards.

In 2016, as part of their 30th Anniversary observances, PCGS gave away a limited edition Holder Evolution poster showcasing 12 key generations of the PCGS holder¹. The data was posted online as the “PCGS Museum of Coin Holders”². In late 2021 the site moved to a new URL. The former page documents the holders in current use.

PCGS Museum of Coin Holders at

<https://www.pcg.com/holdermuseum>

NGC’s “Evolution of the NGC Holder” site dates from late 2020.

Evolution of the NGC Holder at

<https://www.ngccoin.com/about/evolution-of-ngc-holder/>

¹ Shown here: <https://forums.collectors.com/discussion/966866/the-evolution-of-the-pcgs-holder>

² <https://www.pcg.com/holders>

PCGS Blue Label State Series Samples

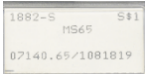
Also in 2020, John DeWitt (86Saab) began to buy and sell Old Slabs on his own site. That led him to expand, consolidate, research, reorder, and otherwise extend the message board “generations” lists to publish what are considered the current definitive listings for ANACS, CACG, NGC, and PCGS at <https://www.oldslabholders.com/> (OSH).

John’s work and the TPGs’ museums do not always agree. Luckily, for the period of the Blue Label 50SQ samples, they are in pretty close agreement.

All of these assume that the samples closely track the changes made in the production slabs, this is not always correct (samples can be made ahead to show up new versions or behind to use up old stock). Sample labels often follow their own logic, vs. standard production labels. Errors are not infrequent. Thus, samples are a subset/superset of production slabs.

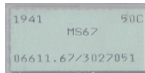
Because it’s more detailed, we are using the OSH numbers from here on.

Generation 1.0 and 1.1



Initially in February 1986, PCGS used white labels, no samples are known in these very rare slabs.

Generation 1.2



The common (relatively) green label came into use in February 1986 and continued until the counterfeiting scandal erupted in the summer of 1989.

Generation 2.0



The “Doily” label was used for a short time in 1989. A very few samples are known.

PCGS Blue Label State Series Samples

Generation 2.1A/2.1B/2.2/3.0



PCGS returned to a green label of several variations with several different physical holders through 1998.

Generation 4.0A/4.0B/4.1/4.2/4.3/4.4/4.5



In October 1998, PCGS switched to a solid light blue label which is where this white paper focuses.



The 2010 Gold Shield (not normally seen in samples) used a darker solid blue.



Generation 4.6 and beyond

End of the solid blue label ends the period of this white paper. It was followed by the gradient (blue to white) label in January 2013. Minor varieties of this are the current label in use as of 2025 with all of the action on the reverse side.

Solid Blue Labels

Here we begin our discussion of the eleven types of Solid Blue Label Fifty State Quarter Samples.

Broadly, Eight-digit certificate numbers (*types* 4-8) are after Seven-digit (*types* 1-3) according to the Holder Museum and John. Other reports place the change from 7 to 8-digit certificate numbers in December 2001. The sample slab record supports this, the latest coins known in 7-digit samples are *Type* 2s with Vermont quarters which were released on August 6, 2001 and the *Type* 3 with a New York quarter.

PCGS Blue Label State Series Samples

The record is murkier for the 8-digit samples. The earliest coins known in 8-digit samples are New York quarters, released on January 2, 2001.

I've sequenced *Type 4* (PCGS MS00 grade) before *Type 5* (PCGS-Sample grade) based on the different certificate number and the grade line. *Type 4s* use 71041779. All *Type 5s* and later use 71041540.

Cam's site has samples up through the ANA summer 2006 show in Denver but references the large hologram only in PCGS 20.2. With the *Type 6* (2-line) hologram used only between November 2004 and March 2005, this is almost certainly *Type 7*. It doesn't show the 71041779 cert#, leaving us with *Type 5* for most of what is shown on the site, but this doesn't help with sequence.

If you wanted to argue the *Type 4s* came after *Type 5s*, based on the 2001-2003 coins in 5s and 2003 coins in 4s, I couldn't argue with you. It would just mean PCGS flipped back to an earlier label style for a brief period, which has certainly happened.

Even with a rough timeline there are production slabs that

The slab to the right clearly which ended in February 2002. The denomination and PCGS MS67

Except for the eight-digit universally seven digits.

Off to the PCGS database. pictured slab are groups of mint Carolina 2000-D coins graded MS66. Virginia, New Hampshire, Massachusetts, Maryland. \$1 silver Buffalos. With



from samples and Old Slab Holders, continue to puzzle us.

has the Generation 4.0B configuration, bar code, hologram, MD 25C grade match sample *Type 2*.

cert#. Observed *Type 2* samples are

What we see in the ranges around the state and proof 50SQs. 61 South Carolina 2000-D coins graded MS66. Virginia, New Hampshire, Massachusetts, Maryland. \$1 silver Buffalos. With

PCGS Blue Label State Series Samples

the high visibility of the programs in the early 2000s, we're going to assume these were a new cert# range 710##### which was opened up for bulk graded coins for sales on TV and via newspapers. This was the range used for the *Types* 4-8 samples with their 8-digit cert#s.

With the long lifespan of this label, generally, we cannot tell if multiple batches of the “same” sample were produced at different times. Sometimes, we have clues, for example a pair of varieties use the 7727268 Cert#. The different label text, “Sample-Collectors.com” and “Collectors.com Sample” make for an easy attribution to (at least) two batches.

Holograms

There are two very slightly different versions of the PNG Hologram (Generation 4.0/4.1). According to the Holder Museum, “First ones had straight sides, later ones had curved sides.” The straight sided ones are 14mm high and 16mm wide. The curved sides are 15mm high and 17mm wide.

We have not differentiated these within types, even in hand they are difficult to identify, and all but impossible to tell apart from photographs. Blown up for clarity:

PCGS Blue Label State Series Samples



Table 1 – Small, “PNG” holograms

There are two versions of the large rectangular hologram, they are easily differentiated by the stock symbol.

The Holder Museum shows the 2-line stock symbol hologram (under the St Gaudens coin on the right side) predates the 1-line stock symbol hologram (left side).

Type 6 is on two lines, centered under the Double Eagle.



PCGS Blue Label State Series Samples

For *Types* 7-11 the stock symbol is on one line, centered under PCGS.



Table 2 – Large Rectangular holograms

The rest of the classification revolves around the obverse label, the text and arrangement of data. You start with whether the label lists Series/Coin and the

- Denomination (25C or state code + 25C)
- Grade text (e.g. PCGS MS00 or the like)
- Sample text (e.g. <statename> Sample)

The Eleven types

In summary the 11 types can be described thusly:

Type	Denom	Grade	Cert#s	“Sample Line”	Barcode	Hologram
Series/Coin						
1	25C	PCGS MS00	7-digit, various	<State name> Sample	reverse	sm sq PNG
2	XX 25C	PCGS MS00	7-digit, various	<State name> Sample	reverse	sm sq PNG
3	XX 25C	PCGS MS00	7962423	<State name>-Sample	no	sm sq PNG
4	25C	PCGS MS00	71041779	<State name>-Sample	no	sm sq PNG
5	XX 25C	PCGS-Sample	primarily 71041540	<State name>	no	sm sq PNG
6	XX 25C	PCGS-Sample	71041540	<State name>	no	lg rect StG, 2 line stock info (r)

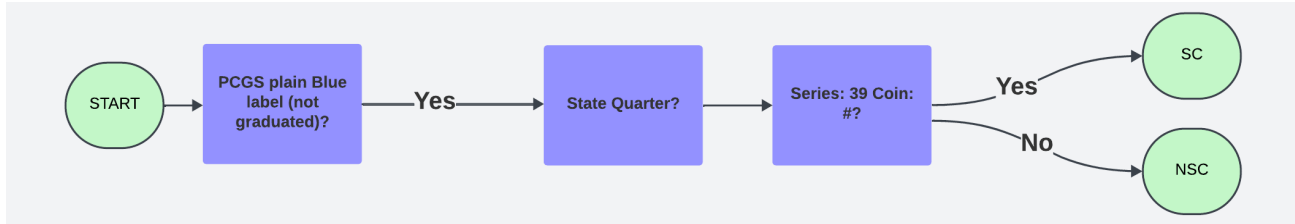
PCGS Blue Label State Series Samples

Type	Denom	Grade	Cert#s	"Sample Line"	Barcode	Hologram
7	XX 25C	PCGS-Sample	71041540	<State name>	no	lg rect StG, 1 line stock info (I)
Non Series/Coin						
8	XX 25C	PCGS-Sample	71041540	<State name>	no	lg rect StG, 1 line stock info (I)
9	XX 25C	PCGS-Sample	12345678	<State name>	no	lg rect StG, 1 line stock info (I)
10	XX 25C	PCGS-Sample	1234567	<State name>	no	lg rect StG, 1 line stock info (I)
11	XX 25C	PCGS-Sample	1234567	<State name>	no	lg rect StG, 1 line stock info (I)

PCGS Blue Label State Series Samples Classifier

The classifier³: shows visually how to take a slab and figure out its *Type*.

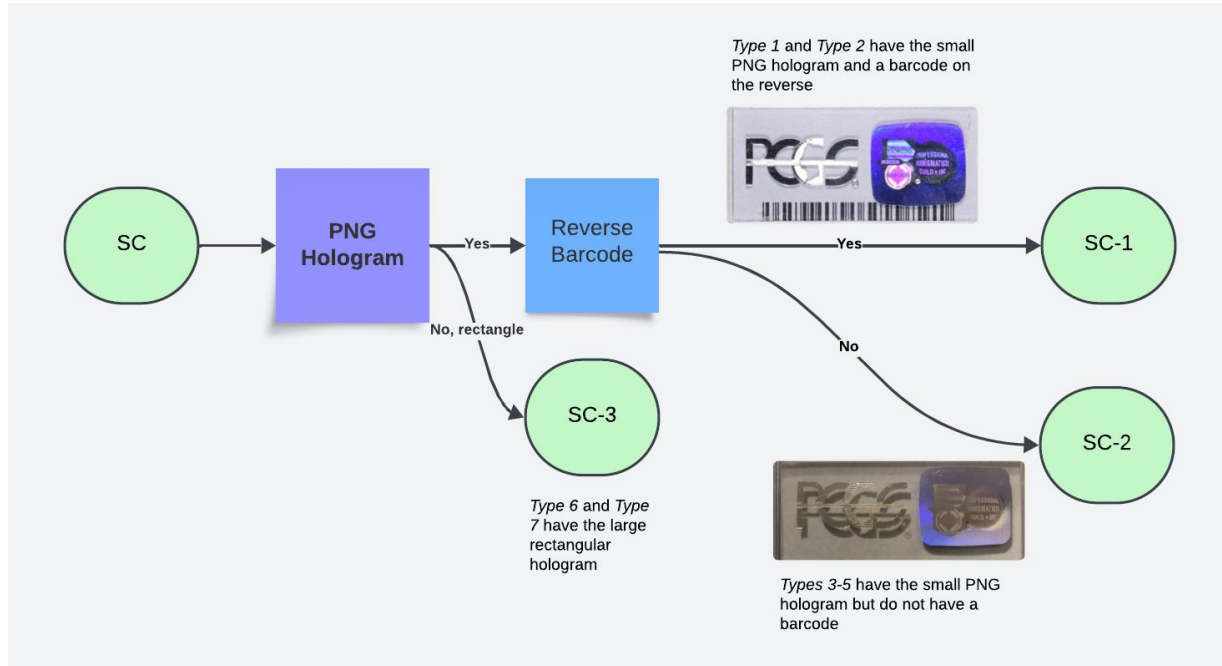
In this first diagram, we differentiate Series/Coin vs. non Series/Coin:



³ The diagrams are created with LucidSpark's free plan, a user-friendly drawing tool I happened upon. <https://lucid.app/>

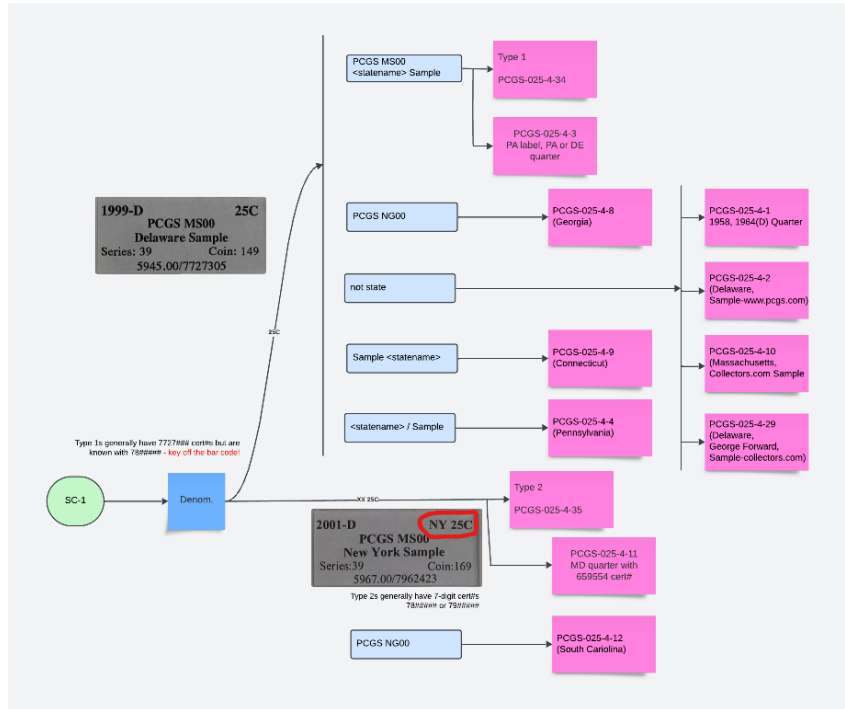
PCGS Blue Label State Series Samples

For the seven Series/Coin sample types, we need this set of directions and three additional diagrams:



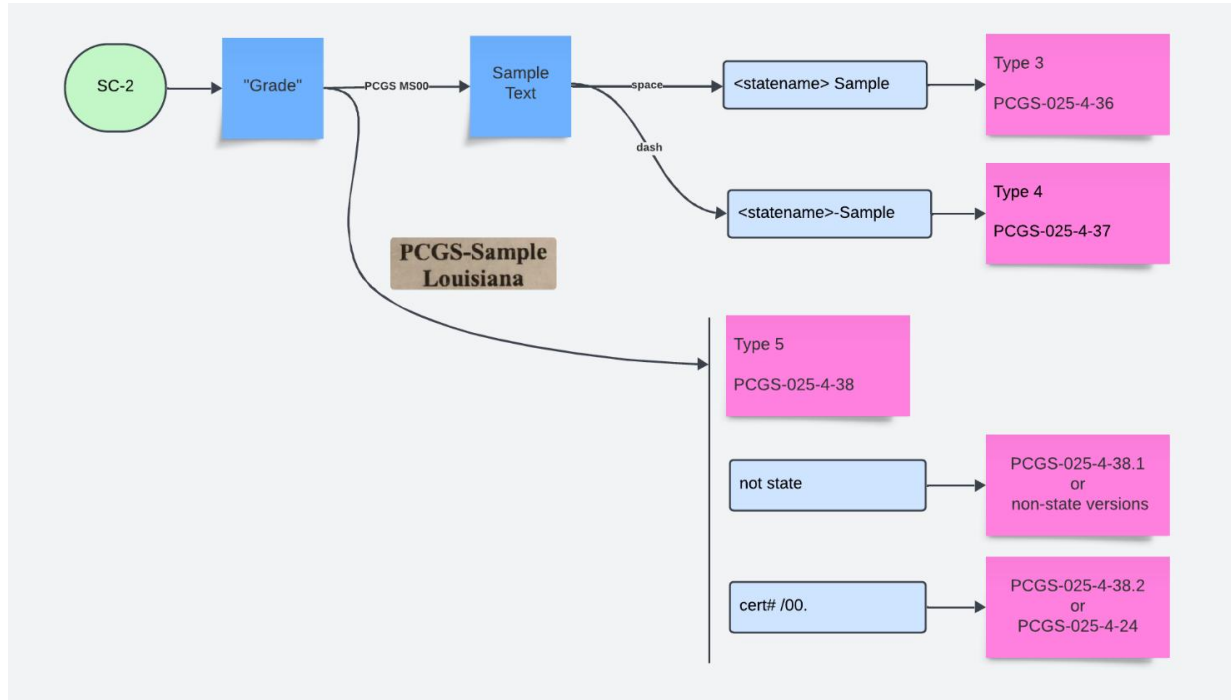
PCGS Blue Label State Series Samples

SC-1 differentiates between *Type 1* (which has a large # of related samples) and *Type 2*:



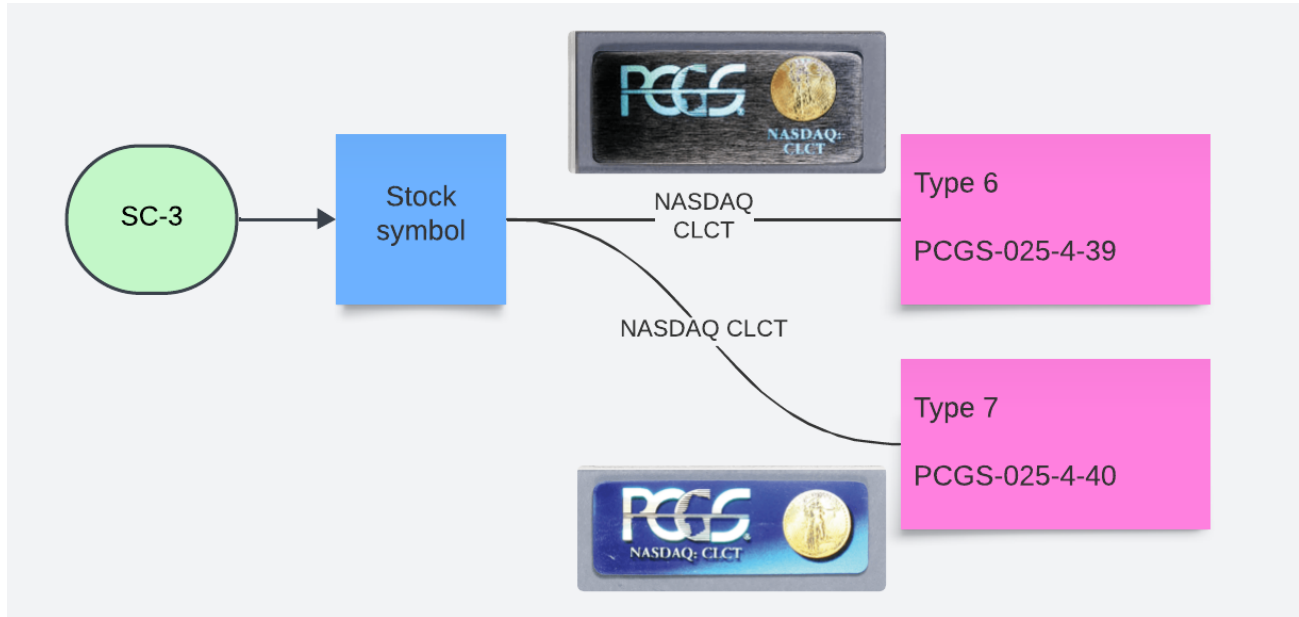
PCGS Blue Label State Series Samples

SC-2 differentiates among the remaining small PNG hologram Series/Coin types without a barcode, *Types 3 – 5*:



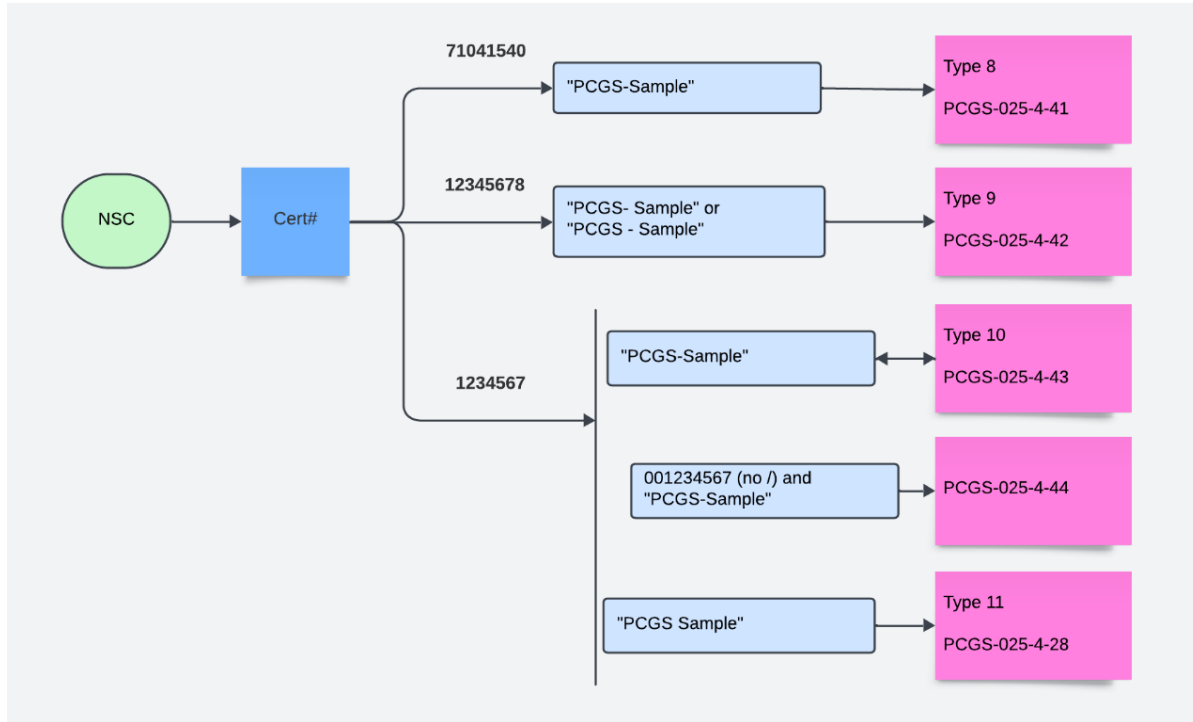
PCGS Blue Label State Series Samples

SC-3 handles the two Series/Coin types with the larger rectangular hologram, *Type 6* and *Type 7*:



PCGS Blue Label State Series Samples

Finally, for the non Series / Coin samples, we divide them into four additional *Types*:



PCGS Blue Label State Series Samples

Series/Coin Samples

The Series/Coin samples comprise seven basic multi-state/multi-mintmark types and many one-off and special varieties.

Type 1 – PCGS-025-4-34

Type	Denom	Grade	“Sample Line”	Barcode	Hologram
<i>1999 to 2000 coins – various seven-digit cert#</i>					
1	25C	PCGS MS00	<State name> Sample	reverse	sm sq PNG
<i>Known: Washington Quarters (1959, 1964-D) Delaware (released January 4, 1999) through New Hampshire (released August 7, 2000)</i>					
Generation: 4.0B or 4.0 (full match) (10/1998 – 2/2002)					

According to evidence from Cam’s SampleSlabs.com and the Generations list, these would have been the first Series/Coin samples.

The known states include the first nine of the ten states from the first two years of the 50SQ program except Virginia (released October 16th) which, with the generations dating and seven-digit cert#s, supports a 2000-2001 timeframe.

Type 1 has the widest and most interesting range of certificate numbers:

Cert#	Observed
6594561	2
659554	2
7727###	39
78##### or 79#####	21
Total	64

Be aware that cert# 7852186 is now known across four states in both *Type 1* and *Type 2* - look for the state name on the denomination (XX 25C vs. 25C).

Type 1 variants

Type 1 has the largest number of varieties and sub-types due to minor labeling variations. This is not surprising for a early, long-lived series of samples. Most of these were found and recognized in the 1st and 2nd editions of the book, we’ve retained the historical numbers instead of using varieties such as 34.1.

PCGS Blue Label State Series Samples

Type	Schwager#	Notes
1.1	PCGS-025-4-8	NG00 grade (Georgia) ⁴
1.2	Various non-state samples	
	PCGS-025-4-1	1958, 1964-D Quarter
	PCGS-025-4-2	Sample-www.pcgs.com (Delaware)
	PCGS-025-4-10	Collectors.com Sample (Massachusetts),
	PCGS-025-4-29	Sample-Collectors.com (Delaware)
1.3	PCGS-025-4-9	Sample <statename> (Connecticut)
1.4	PCGS-025-4-4	<statename> / Sample (Pennsylvania)

Table 3 – Type 1 minor varieties

Series/Coin Type 2 – PCGS-025-4-35

Type	Denom	Grade	“Sample Line”	Barcode	Hologram
<i>1999 to 2001 coins – various seven-digit cert#</i>					
2	XX 25C	PCGS MS00	<State name> Sample	reverse	sm sq PNG
<i>Known states: Delaware through Vermont (released August 6, 2001)</i>					
Generation: 4.0B or 4.0 (full match) (10/1998 – 2/2002)					

With Virginia (from 2000) and 3 of the 5 coins from 2001, these are likely to have been produced after *Type 1*. Vermont was released on August 6th and Kentucky (not observed) was released on October 15th, leading to a hypothesized end of *Type 2* in Fall 2001.

The reverse bar code plus the state code 25C denomination are the key pick-up points.

⁴ XX 25C could make this a Type 2 variant, but the 7727#### cert aligns with Type 1.

PCGS Blue Label State Series Samples

Type 2 variants

Type	Schwager#	Notes
	PCGS-025-4-11	Includes the variety with unique six-digit error serial number, 659554 (Maryland). David doesn't differentiate the Denver 7962434 from the Philadelphia 659554. Most likely a leading 7 was left off, making the intended cert# 7659554. ⁵
2.1	PCGS-025-4-12	NG00 grade (South Carolina) Cam's PCGS 11.1 – with only the obverse pictured on the site – was thought to be <i>Type 3</i> , but was proven to be <i>Type 2.1</i> when Tim sold the coin in 2024 with a reverse picture showing the bar code.



Table 4 - Type 2 minor varieties

Type 1/Type 2s are also known with coins other than state quarters, but with no state code to modify the denomination, there's no differences. e.g.

⁵ It could also be a missing 4, e.g. 6594554, given that there is a *Type 2* 6594561 known, but either way this is clearly *Type 2* (MD 25C).

PCGS Blue Label State Series Samples



Series/Coin Type 3 – PCGS-025-4-36

Type	Denom	Grade	“Sample Line”	Barcode	Hologram
<i>2001 coins – seven-digit cert#, 7962423</i>					
3	XX 25C	PCGS MS00	<State name>-Sample	no	sm sq PNG
<i>Known state: New York (released January 2, 2001)</i>					

This type is a logical extension between *Type 2* and *Type 4*, but it is rare with only two known, both New York. It occupies the timeline between the end of *Type 2* in Fall 2001 and the beginning of *Type 4* in February 2002, i.e. the 47th FUN Show in Orlando, FL.

We observe the seven-digit certificate number of *Type 1* and *Type 2* (PCGS Gen 4.0).

Type 4 has the eight-digit certificate number (71041779) and a short-lived dash between the state name and “Sample”.

That leaves the presence/absence of the bar code as the pickup point to differentiate between *Type 2* and *Type 3*. Additionally, both examples lack the space after the colons of Series: and Coin:.

Series/Coin Type 4 – PCGS-025-4-37

Type	Denom	Grade	“Sample Line”	Barcode	Hologram
<i>2003 coins – eight-digit cert#, 71041779</i>					
4	25C	PCGS MS00	<State name>-Sample	no	sm sq PNG
<i>Known states: Missouri (released August 4, 2003) and Arkansas (released October 20, 2003)</i>					
Generation: 4.1 (partial match – no bar code) (2/2002 – 11/2004)					

PCGS Blue Label State Series Samples

Also incredibly rare with only Missouri and Arkansas in hand.

The spaces after the colons are back. There now is a dash between the state name and the word Sample. The certificate number is now the 8 digits of the PCGS Museum generation 4.1. OldSlabHolders shows – but doesn’t call out – the extra digit. Both states use cert# 71041779, *Type 5* and later use 71041540.

Both sources say these were made between 2/2002 and 11/2004, which 2003 coins fit into. However, with only a few examples observed, they may have been made for a narrower time range.

Series/Coin Type 5 – PCGS-025-4-38

Type	Denom	Grade	“Sample Line”	Barcode	Hologram
<i>2001 to 2003 coins – eight-digit cert#, primarily 71041540</i>					
5	XX 25C	PCGS-Sample	<State name>	no	sm sq PNG
<i>Known states New York through Maine (released June 2, 2003)</i>					
Generation: 4.1 (partial match – no bar code) (2/2002 – 11/2004)					

With this type, we move away from the MS00 pseudo-grade to “PCGS-Sample” and the second line is just the state name vs. state and Sample. The Cert#, 71041540 continues in use until *Type 8*.

Type 5 variants

Type	Schwager#	Notes
	Not assigned	Without spaces after the colons (New York, Louisiana)
	Not assigned	With Series/Coin bold (known from Cam’s site as PCGS 15.1)
5.5	PCGS-025-4-24	/00. not the common .00/
	PCGS-025-4-25	Loiusiana mis-spelling
	PCGS-025-4.25.1	Loiusiana mis-spelling and /00. not the common .00/

Table 5 - Type 5 minor varieties

PCGS Blue Label State Series Samples

Series/Coin Type 6 – PCGS-025-4-39

Type	Denom	Grade	“Sample Line”	Barcode	Hologram
2001 to 2005 coins – eight-digit cert#, 71041540					
6	XX 25C	PCGS-Sample	<State name>	no	lg rect StG, 2 line stock info (r)
<i>Known state: New York through Minnesota (released April 4, 2005)</i>					
Generation 4.2 (partial match – no bar code), November 2004 – March 2005					

Old Slab Holders indicates the Generation 4.2 “Silverback” holder was used from November 2004 to March 2005. This sample type is known with Louisiana (2002) coins and three 2004 states – Michigan, Florida, and Texas.

Type 6 variants

Schwager#	Notes
PCGS-025-4-39.1	Michigan quarter coin#, 14024, but a Texas coin# (14028)
PCGS-025-4-39.2	Cam’s site PCGS 20.2 (image below)

Table 6 – Type 6 minor varieties

PCGS-025-4-39 is a *Type 6*, described in 2023 in the Rare Plastic for the Weekend thread on the PCGS board. It has the incorrectly formatted coin/grade/cert# as 14008/00-71031540 instead of 14008.00/71031540.

Cam’s PCGS 20.2 without the space between the state code and 25C, and without the dash between PCGS and Sample. He explicitly called out the large hologram, making this clearly *Type 6*. We call this PCGS-025-4-43.1.

It was sold on eBay at a significantly higher value than other Louisiana samples in January 2024 but escaped our notice at the time, so officially we can’t confirm *Type 6* vs. *Type 7*.



PCGS Blue Label State Series Samples

Series/Coin Type 7 – PCGS-025-4-40

Type	Denom	Grade	“Sample Line”	Barcode	Hologram
<i>2001 to 2004 coins – eight-digit cert#, 71041540</i>					
7	XX 25C	PCGS-Sample	<State name>	no	lg rect StG, 1 line stock info (I)
<i>Known states: New York through Texas (released June 1, 2004)</i>					
Generation 4.3 (partial match – no bar code), March 2005 – November 2005					

The final Series/Coin sample type uses the single line NASDAQ:CLCT hologram of Generation 4.3 used from March to November 2005 (Generation 4.4 used from November 2005 removed the Series/Coin data).

Along with 2001 New York and Rhode Island, the samples are known with 2004 Iowa, Wisconsin, and the 32nd coin in the 50SQs, Minnesota, released on April 4, 2005.

Type 7 variants

Schwager#	Notes
Not assigned	Series: / Coin: with spaces (New York and Rhode Island)
Not assigned	Series:/Coin: without spaces (Iowa, Wisconsin, Minnesota)

Table 7 – Type 7 Minor varieties

PCGS Blue Label State Series Samples

Non Series/Coin Blue Label Samples

In the first edition, only the single Alaska non Series/Coin solid blue label sample, PCGS-025-4-28, known. This is now used for all three states of this *type 11*.

The depth of the non Series/Coin Blue Label samples were not exposed until the retirement sale of the personal collection of a dealer/ANA representative from Texas when several states, previously unknown in sample slabs were found. Then from Cameron Kiefer's collection, we were able to assemble an almost complete set of the 2005-2008 coins. *Where is Minnesota????*

What was notable of this group are the “rare in sample slabs” later year 50SQs – many of the TPGs started using the Presidential “Golden” dollar coins in 2007.

Based on these discoveries, four Schwager numbers (one from the 1st edition and three created for the 3rd edition) were adjusted to represent the four different types of “non Series/Coin blue label” samples instead of one number for each individual state. It does take a careful eye to tell them apart. All use correct PCGS coin numbers - 140xx and 390xx are correct coin numbers for clad 50SQs but bogus certificate numbers. All have the 1-line large rectangular hologram of the *Type 7*. The following shows the non Series/Coin types.

Non Series/Coin Type 8 – PCGS-025-4-41

Type	Denom	Grade	“Sample Line”	Barcode	Hologram
<i>1999 to 2000 coins – eight-digit cert#, 71041540</i>					
8	XX 25C	PCGS-Sample	<State name>	no	lg rect StG, 1 line stock info (!)
<i>Known states: New York through West Virginia (released October 14, 2005)</i>					
Generation 4.3 (partial match – no bar code), March 2005 – November 2005					

<coinnumber>.00/71041540 Cert#, “PCGS-Sample” grade.

Here we have the 71041540 Cert# of the final Series/Coin Type 7 samples, but without that information. PCGS dropped it in November 2005 according to the holder museum.

New York 2001D, Vermont 2001D,

California 2005P, Oregon 2005P, Kansas 2005P, West Virginia 2005P

PCGS Blue Label State Series Samples

Non Series/Coin Type 9 – PCGS-025-4-42

Type	Denom	Grade	“Sample Line”	Barcode	Hologram
2006 coins – eight-digit cert#, 12345678					
9	XX 25C	PCGS-Sample	<State name>	no	lg rect StG, 1 line stock info (!)
<i>Known state: Nevada (released January 31, 2006) and Nebraska (released April 3, 2006)</i>					
Generation 4.3 (partial match – no bar code), March 2005 – November 2005					

Type 9 is a hot mess. It would be hard to define this as a separate type based only on the spacing around the dash, but this type also uses an eight-digit bogus cert#, <coinnumber>.00/12345678 not 1234567. It's known from just two examples.

Nevada 2006P, Nebraska 2006P

Further complicating things, they both have different “grade” lines. “PCGS- Sample” or “PCGS - Sample” grade which is one way we usually break down types. For now, keeping an eye on eBay for more, and calling this a single type with two potential subtypes.

PCGS- Sample (dash space)

PCGS-025-4-42.1 Nevada 2006P

PCGS - Sample (space dash space)

PCGS-025-4-42.2 Nebraska 2006P

Non Series/Coin Type 10 – PCGS-025-4-43

Type	Denom	Grade	“Sample Line”	Barcode	Hologram
2006 to 2008 coins– eight-digit cert#, 1234567					
10	XX 25C	PCGS-Sample	<State name>	no	lg rect StG, 1 line stock info (!)
<i>Known states: Colorado (released June 14, 2006) through New Mexico (released April 7, 2008)</i>					
Generation 4.3 (partial match – no bar code), March 2005 – November 2005					

<coinnumber>.00/1234567 Cert#, “PCGS-Sample” grade. Note that both this and *Type 11* use 1234567 cert#, the difference is a dash here vs. a space.

Colorado 2006P, North Dakota 2006P, South Dakota 2006P

Montana 2007P, Washington, Idaho 2007D, Utah 2007D, Wyoming 2007D

Oklahoma 2008D, New Mexico 2008P

PCGS Blue Label State Series Samples

Type 10 variants

Type	Schwager#	Notes
10.1	PCGS-025-4-44	Cert# is 001234567, i.e. a missing /

Non Series/Coin Type 11 – PCGS-025-4-28

Type	Denom	Grade	“Sample Line”	Barcode	Hologram
<i>2008 coins– eight-digit cert#, 1234567</i>					
11	XX 25C	PCGS Sample	<State name>	no	lg rect StG, 1 line stock info (l)
<i>Known states Arizona (released June 2, 2008) through Hawaii (released November 3, 2008)</i>					
Generation 4.3 (partial match – no bar code), March 2005 – November 2005					

1234567 Cert#, “PCGS Sample” grade (space no dash), vs. the PCGS-Sample of *Type 10*. The Schwager # is out of sequence as this was recognized as an Alaska sample in the 2nd edition and has been expanded to address the additional states.

A complete set of all 50 states of this type is known via an Instagram post, the owner says it was a prize at a coin show.

Arizona 2008P, Alaska 2008D, Hawaii 2008D

PCGS Blue Label State Series Samples

Promotional Samples

There are a substantial number of promotional sample issues with 50SQs and labels similar to the Series/Coin and Non Series/Coin samples. Much/all of the label real estate is used for promotional purposes and we cannot further classify them (nor do we need to beyond listing them in the book).

Some examples

- “From Bowers and Merena” sample, PCGS-025-4-15,



has the small PNG hologram and the “25C” denomination. It omits the bar code and doesn’t say Series/Coin.

- “Compliments of Cameo CC”, 2002(P) Ohio 50SQ, PCGS-Sample grade, small PNG hologram, “OH 25C” denomination (PCGS-025-4-23) – closely matches *Type 5.2*.
- “Courtesy of / Numismatic Financial Corp., Inc.”, 2004(P) Florida 50SQ, no grade, small PNG hologram, “25C” denomination (PCGS-025-4-26) – could be *Type 4.2*.

PCGS Blue Label State Series Samples

There are also similar style samples with objects other than 50SQs:

No bar code with the small PNG hologram like *Types 3, 4, 5* – with these we have none of the other differentiating factors.

- Morgan dollar 1899-O (PCGS-100-4-5)
- American Silver Eagle 2004 (PCGS-100-9-13) – however a 2004 date coin more closely relates to *Type 6*.

With the large rectangular 2-line hologram of *Type 6*:

- Morgan dollars 1855-O (PCGS-100-4-4)

With the large rectangular 1-line hologram of *Type 7*:

- FASTCOIN Token (PCGS-Token-9-1)

PCGS Blue Label State Series Samples

Cross Reference and Populations

Rolling it all together, through March 2025 in our collections and occasional dips into eBay, here is what we've observed. This table shows all 11 types, the "other" 50SQ blue label samples, identifies retired 1st/2nd Edition Schwager #s, and gives population counts.

Type	Schwager#	status	1st/2nd Edition Schwager#	Slabs	Note
<i>Series/Coin</i>					
Type 1	PCGS-025-4-34			35	
		retired	PCGS-025-4-	5	
		retired	PCGS-025-4-	6	
		retired	PCGS-025-4-30		
		retired	PCGS-025-4-31		
		retired	PCGS-025-4-32		
	PCGS-025-4- 3			5	Type 1, but Schwager# retained due to mislabeled slabs known
no#	11			2	unique six-digit error serial number, 659554
1.1	PCGS-025-4- 8			3	NG00 grade (Georgia)
1.2	PCGS-025-4- 1			7	1958, 1964-D Quarter
1.2	PCGS-025-4- 2			1	Sample-www.pcgs.com (Delaware)
1.2	PCGS-025-4-10			4	Collectors.com Sample (Massachusetts),

PCGS Blue Label State Series Samples

Type	Schwager#	status	1st/2nd Edition Schwager#	Slabs	Note
1.2	PCGS-025-4-29			3	Sample-Collectors.com (Delaware)
1.3	PCGS-025-4- 9			1	Sample <statename> (Connecticut)
1.4	PCGS-025-4- 4			2	<statename> / Sample (Pennsylvania)
Total				60	
<i>Type 2</i>	PCGS-025-4-35			18	
		retired	PCGS-025-4- 7		
		retired	PCGS-025-4-13		
		retired	PCGS-025-4-14		
		retired	PCGS-025-4-17		
2.1	PCGS-025-4-12			1	NG00 grade (South Carolina)
Total				22	
<i>Type 3</i>	PCGS-025-4-36			2	
<i>Type 4</i>	PCGS-025-4-37			3	
<i>Type 5</i>	PCGS-025-4-38			27	
		retired	PCGS-025-4-18		
		retired	PCGS-025-4-21		
	PCGS-025-4-23			1	Compliments of Cameo CC

PCGS Blue Label State Series Samples

Type	Schwager#	status	1st/2nd Edition Schwager#	Slabs	Note
	PCGS-025-4-25			1	Louisiana
no#					Without spaces after the colons (New York, Louisiana)
no#					With Series/Coin bold
5.5	PCGS-025-4-24			10	/00. not the common .00/
Total				39	
<i>Type 6</i>	PCGS-025-4-39			9	
39.1					Michigan quarter coin#, 14024, but a Texas coin# (14028)
39.2					Cam's site PCGS 20.2
Total				9	
<i>Type 7</i>	PCGS-025-4-40			7	
		retired	PCGS-025-4-16		
no#					Series: / Coin: with spaces (New York and Rhode Island)
no#					Series:/Coin: without spaces (Iowa, Wisconsin, Minnesota)
Total				7	
Non Series/Coin					
<i>Type 8</i>	PCGS-025-4-28			5	
<i>Type 9</i>	PCGS-025-4-41			7	

PCGS Blue Label State Series Samples

Type	Schwager#	status	1st/2nd Edition Schwager#	Slabs	Note
		retired	PCGS-025-4-22		
Type 10	PCGS-025-4-42			2	
10.1	PCGS-025-4-44				Cert# is 001234567, i.e. a missing /
				Total	2
Type 11	PCGS-025-4-43			11	
Other					
	PCGS-025-4-15			1	From Bowers and Merena
	PCGS-025-4-19			1	Compliments of Cameo CC
	PCGS-025-4-20			1	CU Forum Lunch Crew
	PCGS-025-4-26			1	Numismatic Financial Corp
	PCGS-025-4-27			1	Merry Christmas 2005
	PCGS-025-4-33				Not used (see PCGS-025-5-7)
				Total	5
				Grand Total	172

PCGS Blue Label State Series Samples

PCGS Blue Label State Series Samples

Appendix – Cross References

Schwager Number Cross Reference

PCGS-025-4- 1, 18, 29	PCGS-025-4-28, 24, 26, 31
PCGS-025-4- 2, 18, 29	PCGS-025-4-29, 18, 30
PCGS-025-4- 3, 29	PCGS-025-4-30, 29
PCGS-025-4- 4, 18, 30	PCGS-025-4-31, 29
PCGS-025-4- 5, 29	PCGS-025-4-32, 2, 29
PCGS-025-4- 6, 29	PCGS-025-4-33, 32
PCGS-025-4- 7, 30	PCGS-025-4-34, 17
PCGS-025-4- 8, 29	PCGS-025-4-35, 18, 30
PCGS-025-4- 9, 18, 30	PCGS-025-4-36, 20, 30
PCGS-025-4-10, 18, 29	PCGS-025-4-37, 20, 30
PCGS-025-4-11, 19, 29	PCGS-025-4-38, 21, 30
PCGS-025-4-12, 19, 30	PCGS-025-4-39, 22, 31
PCGS-025-4-13, 30	PCGS-025-4-39.1, 22, 31
PCGS-025-4-14, 30	PCGS-025-4-39.2, 22, 31
PCGS-025-4-15, 27, 32	PCGS-025-4-40, 23, 31
PCGS-025-4-16, 31	PCGS-025-4-41, 24, 31
PCGS-025-4-17, 30	PCGS-025-4-42, 25, 32
PCGS-025-4-18, 30	PCGS-025-4-42.1, 25
PCGS-025-4-19, 32	PCGS-025-4-42.2, 25
PCGS-025-4-20, 32	PCGS-025-4-43, 25, 32
PCGS-025-4-21, 30	PCGS-025-4-43.1, 22
PCGS-025-4-22, 32	PCGS-025-4-44, 26, 32
PCGS-025-4-23, 27, 30	PCGS-025-4-8, 18
PCGS-025-4-24, 21, 31	PCGS-025-5- 7, 32
PCGS-025-4-25, 21, 31	PCGS-100-4-4, 28
PCGS-025-4-25.1, 21	PCGS-100-4-5, 28
PCGS-025-4-26, 27, 32	PCGS-100-9-13, 28
PCGS-025-4-27, 32	PCGS-Token-9-1, 28

Cert# Cross Reference

1234567, 25, 26	71041540, 6, 21, 22, 23, 24
12345678, 25	71041779, 6, 20, 21
659554, 19	7727268, 7
710#####, 7	7852186, 17
71031540, 22	7962423, 20

PCGS Blue Label State Series Samples

SampleSlabs.com Cross Reference

PCGS	15.1, 21
11.1, 19	20.2, 6, 22

PCGS Blue Label State Series Samples

References

The 50 State Quarter program

<https://www.usmint.gov/learn/coin-and-medal-programs/50-state-quarters>

Presidential \$1 Coins

<https://www.usmint.gov/learn/coin-and-medal-programs/presidential-dollar-coin>

OldSlabHolder PCGS

<https://oldslabholders.com/pcgs-slab-generations>

PCGS Museum of Coin Holders

<https://www.pcg.com/holdermuseum>

PCGS Message Board – Sample Slab Generations

1-3.5 <https://forums.collectors.com/discussion/comment/13736652>

4-5 <https://forums.collectors.com/discussion/comment/13566302>

6-7 <https://forums.collectors.com/discussion/comment/12316380>

8-13 <https://forums.collectors.com/discussion/comment/13414201>

Sample Slabs dot com (Cameron Kiefer) PCGS page

<https://sampleslabs.com/pcgs.htm>